

KIWICOLOUR LUX™ PREPAINTED STEEL COIL

PURPOSE

KiwiColour supplies Lux™ prepainted steel coil (Lux™) for rollforming into building products including, but not limited to, roofing and wall cladding, gutters and associated flashings, garage doors, panels and internal linings.



EXPLANATION

Lux™ comprises a steel substrate (0.4 mm or 0.55 mm) with an aluminium-zinc alloy coating (200g/m²) coated on the backside with a epoxy primer coating (5 µm) and the topside with PVDF coating (total thickness 25 µm) finished off with a final 10 µm -15 µm clear coating with an optional protective film.

For further assistance please contact:

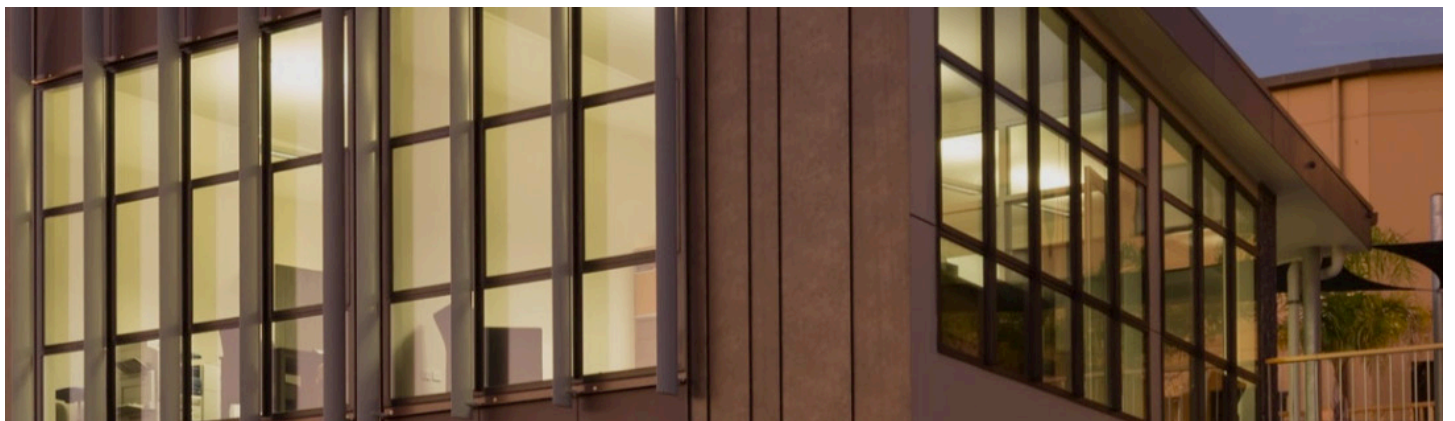
- ☎ (09) 277 2700
- ✉ info@kiwicolour.co.nz
- 🌐 kiwicolour.co.nz

SCOPE AND LIMITATIONS OF USE

| Scope | Limitations |
|---|--|
| Location Environmental categories as defined in AS/NZS 2728:2013. | > Lux™ may be used in environments up to and including Category D (High): <ul style="list-style-type: none"> • West & South coast; ≥ 100 m from the shoreline. • East coast; ≥ 50 m from the shoreline. • Harbours; from the shoreline. • Estuaries; from the shoreline. |
| Proximity to a relevant boundary | > No restrictions subject to rollforming and end supplier installation requirements. |
| Building Building height | > No restrictions subject to rollforming and end supplier installation requirements. |

CONDITIONS OF USE

- > Rollforming of Lux™ coil must be carried out by recognised rollformers to the specification appropriate for the intended use.
- > Installation of the rollformed Lux™ coil must be in accordance with the installation requirements as prescribed by the supplier of the Lux™ building product.



USEFUL INFORMATION

For design, installation and maintenance information, refer to kiwicolour.co.nz.

PERFORMANCE CLAIMS

If designed, installed and maintained in accordance with all KiwiColour requirements, Lux™ will comply with or contribute to compliance with the following performance claims:

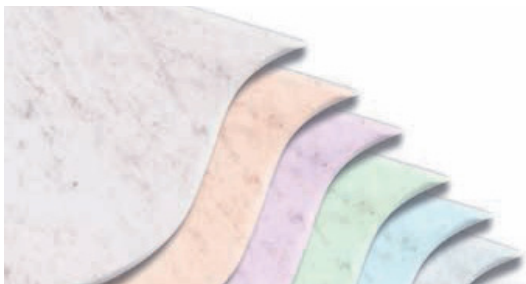
| NZ Building Code clauses | BASIS OF COMPLIANCE | |
|--|--|---|
| | Compliance statement | Demonstrated by |
| B1 Structure B1.3.1, B1.3.2 B1.3.3 (a, b, c, e, j, m, q) | ALTERNATIVE SOLUTION | ➤ Manufactured to AS/NZS 2728:2013 confirmed with manufacturer's test certificate supplied with each batch. |
| B2 Durability B2.3.1 (b) | ALTERNATIVE SOLUTION | ➤ Manufactured to AS/NZS 2728:2013 confirmed with manufacturer's test certificate supplied with each batch. |
| C3 Fire affecting areas beyond the fire source C3.4 (a), C3.7. (a) | ACCEPTABLE SOLUTION C/AS2 2019, amendment 5 November 2020. | ➤ C/AS2 defines steel as non-combustible. ➤ Non-combustible products achieve material group number 1S. |
| F2 Hazardous Building Materials F2.3.1 | ALTERNATIVE SOLUTION | ➤ Manufactured to AS/NZS 2728:2013 confirmed with manufacturer's test certificate supplied with each batch. |

Other performance statement

Lux™ will not contaminate potable water. ➤ Suitability of metal roofs for harvesting rainwater [BRANZ, 04/2018].

SOURCES OF INFORMATION

- Dongkuk Steel. *Manufacturer's Test Certificate*. Indicative example.
- BRANZ. [04/2020]. *Water quality in New Zealand rainwater harvesting systems*. Retrieved from <https://d39d3mj7qio96p.cloudfront.net/media/documents/BRANZ-Facts-HRG-4-Water-quality-rainwater-harvesting.pdf>. [Accessed on 01/04/2024].



SCAN OR CLICK THIS QR CODE TO ACCESS OR REQUEST THE RELEVANT SUPPORTING DOCUMENTATION FOR THIS PASS™.

kiwicolour.co.nz/technical



1. Where a standard is referenced it is to be read as amended by the acceptable solution or verification method as applicable. 2. Sources of information also include the Building Act 2004 and its regulations, including the Building Code (Schedule 1 of the Building Regulations 1992), Acceptable Solutions and Verification Methods, and relevant cited standards. 3. The product is not subject to a warning or ban under section 26 of the Building Act. 4. For overseas manufacturer details, where applicable, refer to the company that is the holder of this pass™. 5. The quality and assurance that the supplied products meet the performance claims stated in this pass™ are the responsibility of the company that is the holder of this pass™. 6. The availability of the information about the supplied products required to be disclosed under s14G(3) is the responsibility of the company that is the holder of this pass™.

Kiwi Steel NZ Ltd (KiwiColour) confirms that if Lux™ is used in accordance with the requirements of this pass™ the product will comply with the NZ Building Code and other performance claims set out in this pass™ and the company has met all of its obligations under s14G(2) of the Building Act.

Date of first issue: 18/03/2021

Date of current issue: 11/04/2024

NZBN: 9429039314239

Kevin Brunton

Kevin Brunton, Technical Director, TBB confirms that the process used to prepare this pass™ on behalf of Kiwi Steel NZ Ltd (KiwiColour) has been undertaken in accordance with MBIE PTS guidelines and in accordance with the TBB pass™ process which is within the scope of TBB's ISO 9001 certification.

90566D6A68E04C0DCA258AB4001045C0

KiwiColour, 12 Hautu Drive, Wiri, Auckland ➤ info@kiwicolour.co.nz ➤ (09) 277 2700 ➤ kiwicolour.co.nz

Copyright © 2017, The Building Business Limited (TBB). All rights reserved.